

CRAFTSMAN UNLIMITED INC.

5437 POINTE LANE EAST

JUPITER, FL 33458

PALM BEACH (407) 575-1126 • MARTIN (407) 220-4660

PROPOSAL SUBMITTED TO VILLAGE OF TEQUESTA/TEQUESTA PARK	PHONE 768-0490/722-1167	DATE 07/29/15
STREET 2280 COUNTY LINE ROAD	JOB NAME LIFT STATION IMROVEMENTS	
CITY, STATE AND ZIP CODE TEQUESTA, FL.	JOB LOCATION TEQUESTA PARK	

ATTENTION: **SAM HEADY**

We hereby propose to furnish materials and labor necessary for the completion of:

INCLUDED

1. FURNISH LABOR, MATERIAL, EQUIPMENT & DESIGN TO COMPLETE THE FOLLOWING WORK SCOPE:
1. INSTALL COMMERCIAL DUPLEX LOW FLOW SYSTEM (AS PER LRD REQ).
2. INSTALL RESIDENTIAL SIMPLEX LOW FLOW SYSTEM. NOTE: TANK TO BE 5 FT HIGH, LOCATE TANK & ELECTRICAL NEXT TO TRAILER & TANK TOP 4" ABOVE EXISTING GRADE.
3. SIMPLEX DISCHARGE LINE TO BE PVC SCHED 40 1 $\frac{1}{4}$ " & DUPLEX TO BE 2" PVC SCHED 40 BOTH TO BE BURIED MIN. 12" DEEP.
4. EXTEND 4" GRAVITY SEWER FROM DUPLEX TO PUBLIC RESTROOM AND CONTINUE 3" PVC SCHED 40 LINE TO PAVILION BLDG (SEE DRAWING).
5. PUMP, CRACK AND FILL TO GRADE (4) EXISTING SEPTIC TANKS.
6. QUOTE CONTINGENT UPON ENGINEER REVIEW AND APPROVAL.
7. SEE EXHIBIT "A" SITE DRAWING AND EXHIBIT "B" ELECTRICAL SCOPE.
8. LOCATE EXTERNAL DUPLEX GEAR TO BACK OF PUBLIC RESTROOM.

ALL PERMITTING AS WELL WE HOLD

NOT INCLUDED:

1. ALL LRD FEES & ALL EQUIPMENT RELATED TO DUPLEX & SIMPLEX LOW FLOW SEWER SYSTEM TO BE SUPPLIED/FURNISHED BY OTHERS.
2. 6" GRAVITY SEWER FROM GIRL SCOUT BLDG TO DUPLEX PUMP.

WE PROPOSE hereby to furnish material and labor — complete in accordance with above specifications, for the sum of:

THIRTY NINE THOUSAND TWO HUNDRED FIFTY DOLLARS. dollars (\$ **\$39,250.00**)

Payment to be made as follows:

\$39,250.00 UPON COMPLETION.

Owner agrees and acknowledges that CRAFTSMAN UNLIMITED INC. is not responsible whatsoever for any malfunction of fixtures, equipment, faucets, valves, miscellaneous related items or pressure loss to the water distribution system.

Owner hereby indemnifies and agrees to hold CRAFTSMAN UNLIMITED INC. harmless from any loss, damage, judgment(s), attorney's fees and costs in the event suit is filed alleging that CRAFTSMAN UNLIMITED INC. caused any damage to the project or surrounding area.

In the event CRAFTSMAN UNLIMITED INC. deems it necessary to retain an attorney or file suit for collection for any monies owed by owner pursuant to this Agreement then owner agrees to be responsible to CRAFTSMAN UNLIMITED, INC. for its reasonable attorney's fees and costs at all trial levels for collection thereof.

All material is guaranteed to be as specified. All work to be completed in a substantial workmanlike manner according to specifications submitted, per standard practices. Any alteration or deviation from above specifications involving extra costs will be executed only upon written orders, and will become an extra charge over and above the estimate. All agreements contingent upon strikes, accidents or delays beyond our control. Owner to carry fire, tornado and other necessary insurance. Our workers are fully covered by Workmen's Compensation Insurance.

Authorized
Signature _____Note: This proposal may be
withdrawn by us if not accepted within 15 days.

ACCEPTANCE OF PROPOSAL The above prices, specifications and conditions are satisfactory and are hereby accepted. You are authorized to do the work as specified. Payment will be made as outline above.

Signature _____

Date of Acceptance: _____

Signature _____

EXHIBIT "B"

PROPOSAL

Date: July 29, 2015

To: Bill Held @ Craftsman Unlimited

Re: Electrical services for Low Pressure Sewer installation at the Village of Tequesta-Countyline Park.

I hereby submit to furnish labor and materials to complete all work as described. Scope of work shall include the following:

1. Build a new electric service adjacent to existing electric service to supply power to house trailer and various existing buildings being fed from the old service that will eventually be removed. The power for the new commercial low pressure system that will be located behind the public restroom facilities will be fed from this same service.
2. Supply power to the new commercial low pressure system behind the restroom facility. Mount control panel and make the proper terminations for pump operations. The control panel and service disconnecting means are to be mounted to the building.
3. Supply power for the residential low pressure system that will service the onsite residence, mount control panel and make proper terminations.

Not Included:

1. Additional work not include above.
2. Any equipment that is provided by Loxahatchee River District.

Cont.

EXHIBIT "A"

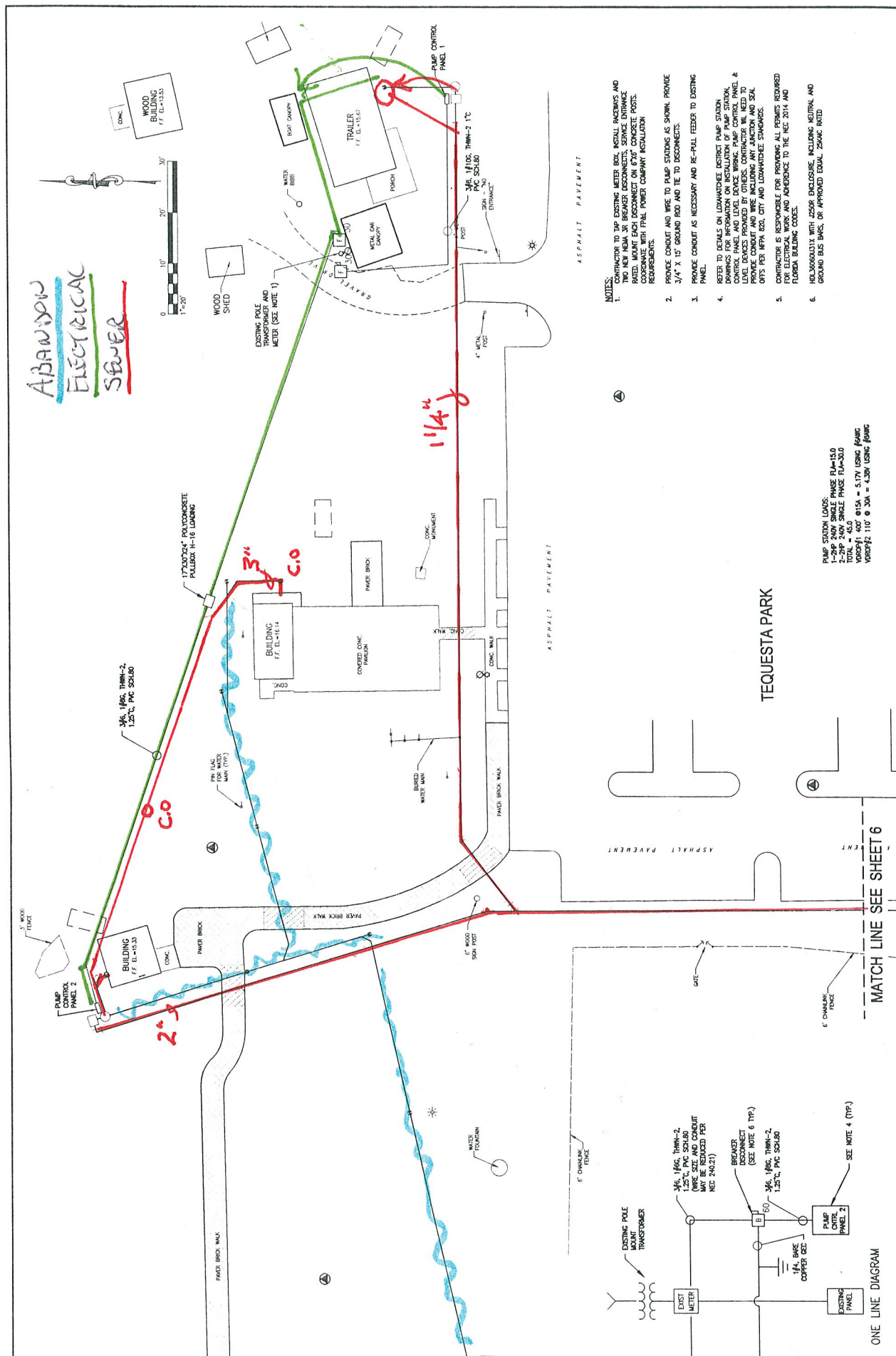


Diagram illustrating the connection for a 144 MHz pump-out station. The setup includes an antenna connected to a coaxial cable, which passes through a COAX METER and a BREAKER (50 ohm). The line then splits into two paths: one through a PUMP OUT PANEL 2 and another through a PUMP OUT PANEL 1. Both panels are connected to a PUMP OUT COAXIAL CABLE, which leads to a PUMP OUT ANTENNA. The diagram also shows an existing pole transformer and a note indicating 'SEE NOTE 4 (TYP.)' for the pump out panels.

ONE LINE DIAGRAM

[illegible]

VILLAGE OF TEQUESTA
TEQUESTA PARK
LIFT STATION IMPROVEMENTS

ARCADIS
 ARCADIS U.S., INC.
 2081 Vesta Parkway
 West Palm Beach, Florida 33411
 Tel: 561-697-7000, Fax: 561-697-7751
 www.arcadis-us.com
 Certificate No.:
 ED00007817, LB7952, LC29000209, 08564

PROJECT MANAGER T. JENSEN	DEPARTMENT MANAGER T. JENSEN	LEAD DESIGNER D. BANNETT	CHECKED BY D. BANNETT
SHEET TITLE		DESIGN BY R. JONES	DRAWING NUMBER
ELECTRICAL SITE AND ONE LINE		PROJECT NUMBER WF900278	11 of 11