

**Job Name:**

Village Shopping Center  
Architect: n2 Architecture & Design (Stuart)  
Engineer: No Engineer

**Catalog Number:**

W520-\*/E4A-\*/LED

**Type:****A**

Notes: \*\*ADVISE STANDARD FINISH

DEER18-111290

# WAREHOUSE SHADES

PREPARED BY: \_\_\_\_\_

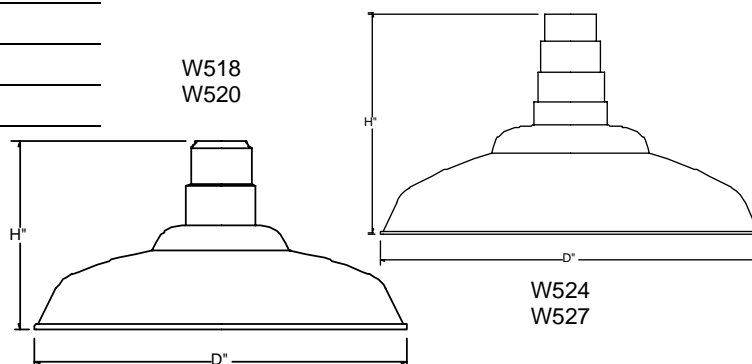
TYPE: \_\_\_\_\_

JOB NAME: \_\_\_\_\_

DATE: \_\_\_\_\_

CERTIFICATION: UL LISTED

MODEL#	D"	H"
W518	18	9
W520	20	10
W524	24	16
W527	27	16



**FINISH**-Five stage pretreatment process, coated with a lead free TGI C polyester powder coat finish. White is standard inside reflectors, Except #49-Galvanized, #62-Anodized Bronze and #63-Iron Rust, Unless specified. Custom colors and Marine are available upon request.

**MOUNTING**- 1/2" or 3/4" tapped hub is supplied. Top or side mount available. Fixtures are pre-wired with 48" or 96" leads. Available with cord or stem sets.

**REFLECTOR**- Spun from heavy gauge 1100-0 aluminum, ranging in thickness from .050 to .125. Galvanized is from 20 gauge sheets. Copper is spun from .040 gauge and 110 soft alloy.

**LAMP HOLDERS**- Accommodates **Incandescent** medium base porcelain socket, copper shell with nicked plate, rated 250V, 660W. **Compact Fluorescent** 4 pin heat resistant thermoplastic socket accommodates 26/32W (Gx24q-3 base) and 42W (Gx24q-4 base). Twist lock design provides for vibration and earthquake resistance, rated 75W, 600V. **High Intensity Discharge (H.I.D.)** medium base, 4KV pulse start socket, rated 660W/600V. **LED**. A minimum of 60,000 hours to 100,000 expected life depending on installation location and ambient temperature.

**ADVISE**

MODEL#	FINISH		LIGHT SOURCE				MOUNTING OPT.
			INC	CF <sup>1</sup>	HID <sup>1</sup>	LED <sup>1</sup>	
W518	40-copper w/ coat	52-patina	300W	26W, 32W, 42W	35W	57W	<b>-Arm extension</b> -Post Mts & Pole -Stem -Cord <sup>2</sup> -Cable & Chain -Hub
W520	41-black	53-rust		1X26W 1X32W 1X42W	50W	79W	
W524	42-dr. green	54-stucco			70W	93W	
W527	43-red	55-sage			100W	93W	
	44-white	57-polish alum w/ coat		2X26W 2X32W 2X42W			
	45-med. blue	58-satin alum. clear coat					
	46-yellow	59-coppertone					
	48-polish alum.	60-canal green					
	49-galvanized	61-anod. charcoal					
	50-navy blue	62-anod. bronze					
	51-arch. Bronze	63-iron rust					

<sup>1</sup>REMOTE BALLAST<sup>2</sup>INC MAX WATTAGE 150W

CALL FACTORY FOR HIGHER WATTAGE

PHONE: 877-999-1990

FAX: 877-999-1955



12260 EAST END AVE. CHINO, CA 91710

MADE IN



**Job Name:**

Village Shopping Center  
Architect: n2 Architecture & Design (Stuart)  
Engineer: No Engineer

**Catalog Number:**

W520-\*/E4A-\*/LED

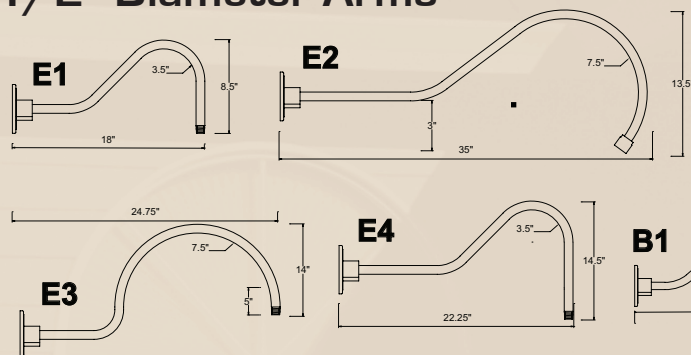
Notes: \*\*ADVISE STANDARD FINISH

**Type:****A**

DEER18-111290

# Arm Extensions

## 1/2" Diameter Arms

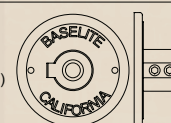


### E14 - Create Your Own

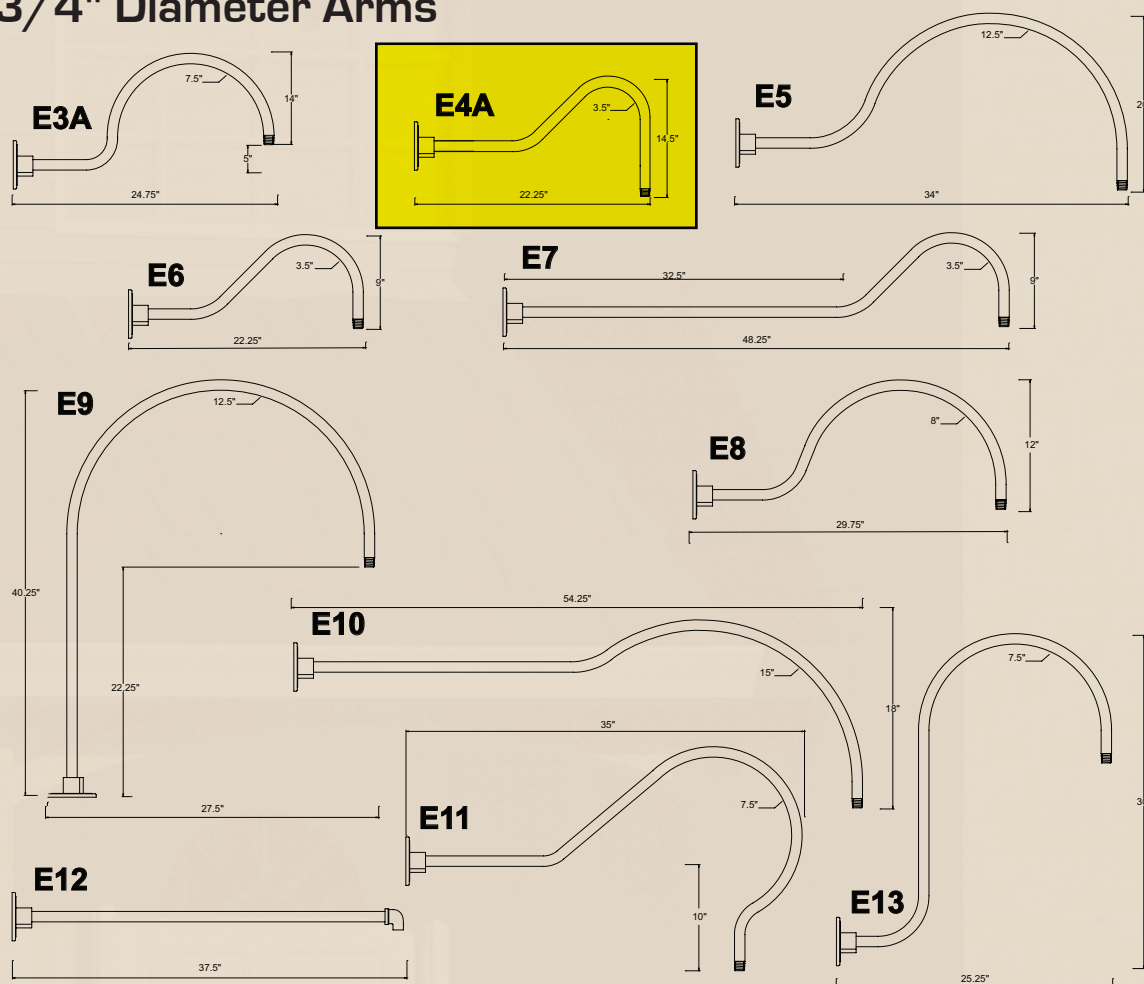


Baselite will take your sketch and fabricate a custom arm extension to meet your needs

All arms sold with Cast Backplate (CB)



## 3/4" Diameter Arms



Round Cast Backplates are standard with Arm Extensions that mount onto recessed 4" octagonal boxes.

**Job Name:**

Village Shopping Center  
Architect: n2 Architecture & Design (Stuart)  
Engineer: No Engineer

**Catalog Number:**

W520-\*/E4A-\*/LED

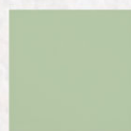
Notes: \*\*ADVISE STANDARD FINISH

**Type:****A**

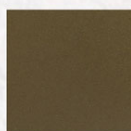
DEER18-111290



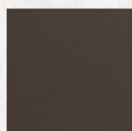
# FINISH OPTIONS



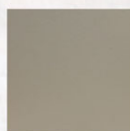
18-Mint Green



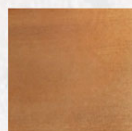
19-Antique Aluminum



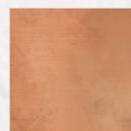
21P-Oil Rubbed Bronze



22P-Old Pewter



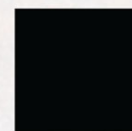
38-Copper Tint



39-Raw Copper



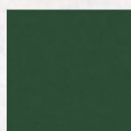
40-Copper with Clear Coat



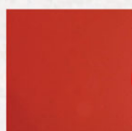
41-Black



41.5-Matte Black



42-Dark Green



43-Red



44-White



45-Medium Blue



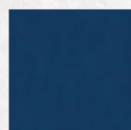
46-Yellow



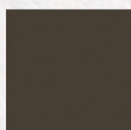
48-Polished Aluminum



49-Galvanized



50-Navy Blue



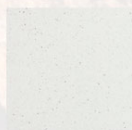
51-Architectural Bronze



52-Patina



53-Rust



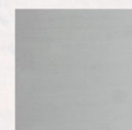
54-Stucco



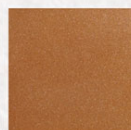
55-Sage



57-Polished Alum. Clear Coat



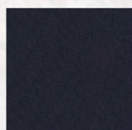
58-Satin Aluminum



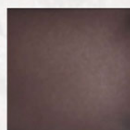
59-Coppertone



60-Canal Green



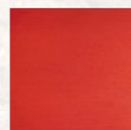
61-Anodized Charcoal



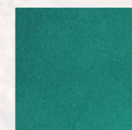
62-Anodized Bronze



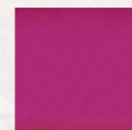
63-Iron Rust



70-Transparent Red



71-Transparent Green



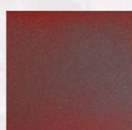
72-Transparent Wine



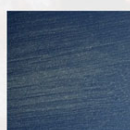
73-Transparent Navy Blue



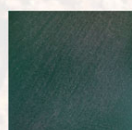
74-Gun Metal



75-Distressed Red



76-Distressed Blue



77-Distressed Dark Green



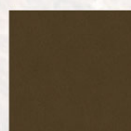
78-Chalkboard Black



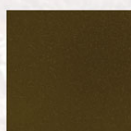
79-Ghost Orange



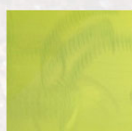
80-Pale Gold



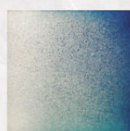
81-Metallic Bronze



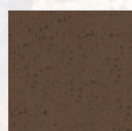
82-Black Gold



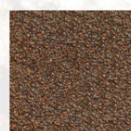
83-Shocker Green



84-Faded Blue



85-Cobblestone



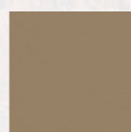
86-Bronze Copper



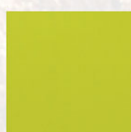
87-Champagne



\*88-Flamed Steel



89- Taupe



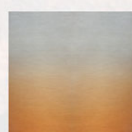
90-Lime Green



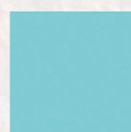
91-Pacific Pine



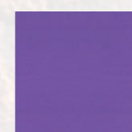
92-Antique Galvanized



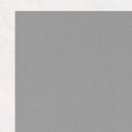
93-Faded Copper



95-Turquoise



96-Purple



97-Battleship Grey



98-Blackened Pipe

- FINISH OPTIONS - 19,38,39,40,49,54,57,58,61,62,63,70,71,72,73,78,83,84,88,92,93,98 - ONLY AVAILABLE FOR INSIDE AND OUT PAINT OPTION.

\* FINISH OPTIONS FOR SPECIFIC LIGHT FIXTURES ONLY \*

\*\*\*\*\* CALL FOR MORE INFORMATION. \*\*\*\*\*

**Job Name:**

Village Shopping Center  
Architect: n2 Architecture & Design (Stuart)  
Engineer: No Engineer

**Catalog Number:**

JSF 7IN 09LM 40K 90CRI MVOLT ZT  
WH

Notes: \*\*ADVISE STANDARD FINISH

**Type:****B**

DEER18-111290

**G1.8.54****JUNO**

# JUNO SLIMFORM™ LED SURFACE MOUNT DOWNLIGHTS

FOR J-BOX INSTALLATION

5", 7", 11", 13" ROUND

**JSF SERIES**

Project: \_\_\_\_\_

Fixture Type: \_\_\_\_\_

Location: \_\_\_\_\_

Contact/Phone: \_\_\_\_\_

**PRODUCT DESCRIPTION**

Sleek, ultra-low profile energy efficient LED surface mount downlights in multiple sizes from 5" to 13" • Provides economical installation by mounting directly over standard and fire-rated junction boxes • Optional finish trims and shrouds available for custom, designer look similar to standard recessed downlights • Provides general illumination in residential and commercial applications including multi-family and hospitality • Ideal for use in corridors, living spaces, closets, hallways, pantries, stairways, outdoor covered areas and much more.

**PRODUCT SPECIFICATIONS**

**Construction** Shallow, less than 1", solid ring with white finish • Non conductive fixture for shower light applications • Optional, field installable finish trims available for 5" and 7" versions to change the exterior finish of fixture • Optional, field installable decorative baffle and cone shrouds for 5" and 7" versions provide the aesthetic and source shielding similar to the experience of a fully recessed downlight.

**Optics** Light guide technology combined with diffusing lens conceals the LEDs from direct view and provides uniform lens luminance.

**LED Light Engine** LEDs mounted directly to heatsink designed to provide superior thermal management and ensure long life • 2700K, 3000K, 3500K or 4000K LED color temperature • LEDs binned for 4-step MacAdam ellipse color consistency • 90 CRI minimum.

**LED Driver** Choice of dedicated 120 volt (120) driver or universal voltage (MVOLT) driver that accommodates input voltages from 120-277 volts AC at 50/60Hz • Power factor > 0.9 at 120V input • 120 volt driver is dimmable with the use of most incandescent, magnetic low voltage and electronic low voltage wall box dimmers • Universal voltage driver is dimmable with the use of most 0-10V wall box dimmers • External driver is only available on 5" and 7" models • For a list of compatible dimmers, see [JUNOSLIMFORM-DIM](#).

**Emergency Battery Option** Available on fixture sizes 11" and larger • Battery factory assembled to fixture with integral test switch (EL option) • Drives LEDs for 90 minutes to meet Life Safety Code (NFPA-LSC), National Electrical Code (NEC), and UL requirements • EBX option provides back box without battery for consistent look when used in same space as fixtures with EL emergency option.

**Life** Rated for 50,000 hours at >70% lumen maintenance.

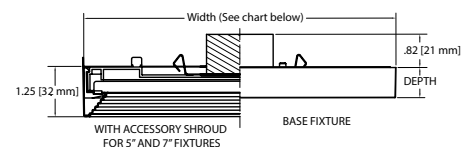
**Labels** ENERGY STAR® certified • Certified to the high efficacy requirements of California T24 JA8-2016 • CSA listed for US and Canada • Suitable for wet locations (covered ceilings).

**Testing** All reports are based on published industry procedures; actual performance may differ as a result of the end-user environment and applications. All values are design or typical values, measured under laboratory conditions at 25 °C.

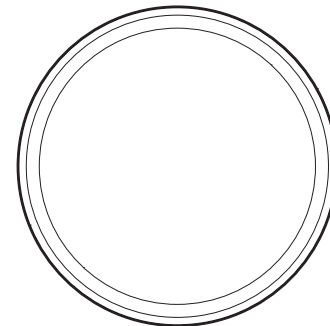
**Warranty** 5-year limited warranty. Complete warranty terms located at [www.acuitybrands.com/CustomerResources/Terms\\_and\\_conditions.aspx](http://www.acuitybrands.com/CustomerResources/Terms_and_conditions.aspx) Specifications subject to change without notice.

**INSTALLATION**

**Junction Box Mounting** Fixture provided with leads for direct wire connection in j-box • Installs directly to industry standard junction boxes • Compatible boxes include 4" metal or plastic octagonal standard and fire-rated junction boxes (3 1/2" junction box screw-hole spacing required for installation) • Minimum 2 1/8" deep junction box required for 5" and 7" fixtures (no depth requirement for 11" and larger fixtures) • Quick mount bracket provides fast installation of fully assembled fixture to junction box • Suitable for ceiling mount • Suitable for use within closet storage spaces when installed per NEC requirements.

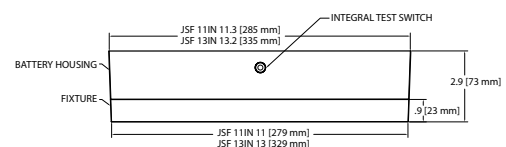
**DIMENSIONS**

External driver available on 5" and 7" models only.

**ROUND SPECIFICATIONS**

	Width	Depth
JSF 5IN	5.25 (13.34)	0.75 (1.91)
JSF 7IN	7.77 (19.74)	0.75 (1.91)
JSF 11IN	11.08 (28.14)	0.9 (2.29)
JSF 13IN	13.05 (33.15)	0.9 (2.29)

All dimensions are in inches (centimeters) unless otherwise indicated.

**EMERGENCY BATTERY FOR 11" AND 13"**

**Job Name:**

Village Shopping Center  
Architect: n2 Architecture & Design (Stuart)  
Engineer: No Engineer

**Catalog Number:**

JSF 7IN 09LM 40K 90CRI MVOLT ZT  
WH

Notes: \*\*ADVISE STANDARD FINISH

**Type:****B**

DEER18-111290

**G1.8.54**

# JUNO SLIMFORM™ LED SURFACE MOUNT DOWNLIGHTS

FOR J-BOX INSTALLATION

5", 7", 11", 13" ROUND

**JSF SERIES****PERFORMANCE DATA**

	JSF 5IN		JSF 7IN		JSF 11IN		JSF 13IN	
	120V	MVOLT	120V	MVOLT	120V	MVOLT	120V	MVOLT
Lumens	700	700	1000	1000	1300	1300	1800	1800
CRI	90CRI		90CRI		90CRI		90CRI	
CCT	27K, 30K, 35K, 40K		27K, 30K, 35K, 40K		27K, 30K, 35K, 40K		27K, 30K, 35K, 40K	
Voltage	120V	120V-277V	120V	120V-277V	120V	120V-277V	120V	120V-277V
Input Power	10W	10W	13W	13W	15W	15W	20W	20W
Input Current	245MA	245MA	320MA	320MA	390MA	390MA	530MA	530MA
Frequency	50/60Hz		50/60Hz		50/60Hz		50/60Hz	
Power Factor	>0.9		>0.9		>0.9		>0.9	

**ORDERING INFORMATION**

Example: JSF 5IN 07LM 27K 90CRI 120 FRPC WH

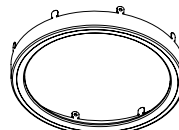
Series	Size/Lumens	Color Temperature	CRI	Voltage/Driver	Finish	Emergency Battery <sup>1</sup>
JSF SlimForm Surface Mount Downlight - Round	5IN 07LM 5", 700 Lumens	27K 2700K	90CRI 90+ CRI	120 FRPC Dedicated 120V, Forward Reverse Phase Dimming	WH White	EL Battery Back-up Option EBX Empty Back Box for Aesthetics
	7IN 10LM 7", 1000 Lumens	30K 3000K				
	11IN 13LM 11", 1300 Lumens	35K 3500K				
	13IN 18LM 13", 1800 Lumens	40K 4000K				
				MVOLT ZT Universal Voltage 120V-277V, 0-10V Dimming		

**ACCESSORIES**

**TRIM** – Optional, field installable finish trim rings available to change the exterior finish of fixture.

Example: JSFTRIM 5IN BL

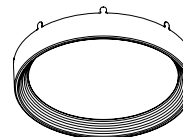
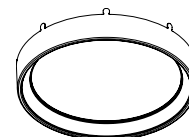
Series	Size	Finish
JSFTRIM SlimForm Accessory - Trim	5IN 5 inches	BL Black
	7IN 7 inches	BZ Bronze
		SN Satin Nickel

**TRIM**

**SHROUD** – Optional, field installable decorative baffle and cone shrouds provides the aesthetic and source shielding similar to the experience of a fully recessed downlight.

Example: JSFSHROUD 5IN DB WWH

Series	Size	Shroud Style	Finish
JSFSHROUD SlimForm Accessory Shroud - Round	5IN 5 inches	DB Downlight Baffle	WWH White trim, white shroud
	7IN 7 inches	DC Downlight Cone	BWH <sup>2</sup> Black trim, white shroud
			HZWH Haze trim, white shroud
			WHZW Wheat Haze trim, white shroud

**BAFFLE SHROUD****CONE SHROUD**

Note:

- Emergency battery available with 11IN and 13IN only.
- BWH only available with downlight baffle.

**Job Name:**

Village Shopping Center  
Architect: n2 Architecture & Design (Stuart)  
Engineer: No Engineer

**Catalog Number:**

JSF 7IN 09LM 40K 90CRI MVOLT ZT  
WH

Notes: \*\*ADVISE STANDARD FINISH

**Type:****B**

DEER18-111290

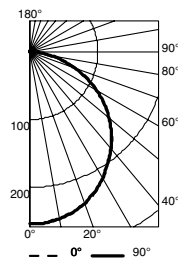
**G1.8.54**

# JUNO SLIMFORM™ LED SURFACE MOUNT DOWNLIGHTS

FOR J-BOX INSTALLATION  
5", 7", 11", 13" ROUND  
**JSF SERIES**

**PHOTOMETRICS****Distribution Curve****Distribution Data****Coefficient of Utilization****Illuminance Data at 30" Above Floor for  
a Single Luminaire**

**JSF 5IN 27K**, 2700K LEDs, input watts: 9.72, delivered lumens: 727, LM/W = 74.8, test no. ISF 33599, tested in accordance to IESNA LM-79.

**CP Summary**

0°	90°
0° 253 253	
5° 253 253	
15° 245 245	
25° 228 227	
35° 201 200	
45° 171 170	
55° 134 134	
65° 93 92	
75° 51 51	
85° 14 14	
90° 1 1	

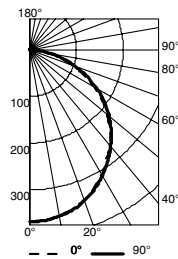
**Coefficients of Utilization**

pc	pw	20%			50%		
		70°	50°	30°	70°	50°	30°
0	119 119 119	116 116 116	111 111 111	111 111 111			
1	109 104 99	101 97 94	97 94 91	97 94 91			
2	99 90 83	88 82 77	85 79 75	85 79 75			
3	90 79 71	78 70 64	75 68 63	75 68 63			
4	82 70 61	69 60 54	66 59 53	66 59 53			
5	76 63 53	61 53 47	59 52 46	59 52 46			
6	70 56 47	55 47 41	54 46 40	54 46 40			
7	65 51 42	50 42 36	49 41 36	49 41 36			
8	60 47 38	46 38 32	45 37 32	45 37 32			
9	56 43 34	42 34 29	41 34 29	41 34 29			
10	53 39 31	39 31 26	38 31 26	38 31 26			

**Zonal Lumen Summary**

Zone	Lumens	% Lamp	% Fixture
0°-30°	197	27.1	27.1
0°-40°	322	44.3	44.3
0°-60°	570	78.5	78.5
0°-90°	727	100.0	100.0
90°-120°	0	0.0	0.0
90°-130°	0	0.0	0.0
90°-150°	0	0.0	0.0
90°-180°	0	0.0	0.0
0°-180°	727	100.0	100.0

**JSF 7IN 27K**, 2700K LEDs, input watts: 12.8, delivered lumens: 1060, LM/W = 82.8, test no. ISF 33600, tested in accordance to IESNA LM-79.

**CP Summary**

0°	90°
0° 368 368	
5° 366 367	
15° 353 355	
25° 326 329	
35° 286 291	
45° 243 247	
55° 189 194	
65° 128 134	
75° 68 74	
85° 16 21	
90° 0 1	

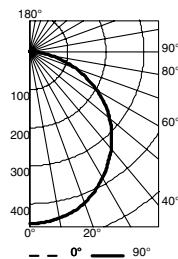
**Coefficients of Utilization**

pc	pw	20%			50%		
		70°	50°	30°	70°	50°	30°
0	119 119 119	116 116 116	111 111 111	111 111 111			
1	109 104 99	101 97 94	97 94 91	97 94 91			
2	99 90 83	88 82 77	85 79 75	85 79 75			
3	90 79 71	77 70 64	74 68 62	74 68 62			
4	82 70 61	69 60 54	66 59 53	66 59 53			
5	76 63 53	61 53 46	59 52 46	59 52 46			
6	70 56 47	55 47 41	53 46 40	53 46 40			
7	65 51 42	50 42 36	49 41 35	49 41 35			
8	60 46 38	46 38 32	44 37 32	44 37 32			
9	56 43 34	42 34 29	41 34 29	41 34 29			
10	53 39 31	39 31 26	38 31 26	38 31 26			

**Zonal Lumen Summary**

Zone	Lumens	% Lamp	% Fixture
0°-30°	286	27.0	27.0
0°-40°	468	44.1	44.1
0°-60°	830	78.3	78.3
0°-90°	1060	100.0	100.0
90°-120°	0	0.0	0.0
90°-130°	0	0.0	0.0
90°-150°	0	0.0	0.0
90°-180°	0	0.0	0.0
0°-180°	1060	100.0	100.0

**JSF 11IN 27K**, 2700K LEDs, input watts: 15.2, delivered lumens: 1305, LM/W = 85.9, test no. ISF 33661, tested in accordance to IESNA LM-79.

**CP Summary**

0°	90°
0° 451 451	
5° 450 450	
15° 435 436	
25° 404 405	
35° 357 358	
45° 305 304	
55° 239 241	
65° 164 165	
75° 90 89	
85° 25 25	
90° 1 1	

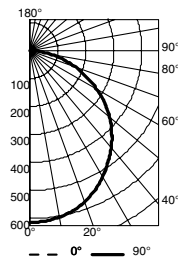
**Coefficients of Utilization**

pc	pw	20%			50%		
		70°	50°	30°	70°	50°	30°
0	119 119 119	116 116 116	111 111 111	111 111 111			
1	109 104 99	101 97 94	97 94 91	97 94 91			
2	99 90 83	88 82 77	85 79 75	85 79 75			
3	90 79 71	77 70 64	74 68 62	74 68 62			
4	82 70 61	69 60 54	66 59 53	66 59 53			
5	76 63 53	61 53 46	59 52 46	59 52 46			
6	70 56 47	55 47 40	53 46 40	53 46 40			
7	65 51 42	50 42 36	49 41 35	49 41 35			
8	60 46 38	46 38 32	44 37 32	44 37 32			
9	56 43 34	42 34 29	41 34 28	41 34 28			
10	53 39 31	39 31 26	38 31 26	38 31 26			

**Zonal Lumen Summary**

Zone	Lumens	% Lamp	% Fixture
0°-30°	352	26.9	26.9
0°-40°	575	44.1	44.1
0°-60°	1021	78.3	78.3
0°-90°	1305	100.0	100.0
90°-120°	0	0.0	0.0
90°-130°	0	0.0	0.0
90°-150°	0	0.0	0.0
90°-180°	0	0.0	0.0
0°-180°	1305	100.0	100.0

**JSF 13IN 27K**, 2700K LEDs, input watts: 20.2, delivered lumens: 1779, LM/W = 88, test no. ISF 33663, tested in accordance to IESNA LM-79.

**CP Summary**

0°	90°
0° 613 613	
5° 611 612	
15° 592 593	
25° 550 550	
35° 486 486	
45° 413 414	
55° 327 327	
65° 225 225	
75° 122 122	
85° 34 34	
90° 1 1	

**Coefficients of Utilization**

pc	pw	20%			50%		
		70°	50°	30°	70°	50°	30°
0	119 119 119	116 116 116	111 111 111	111 111 111			
1	109 104 99	101 97 94	97 94 91	97 94 91			
2	99 90 83	88 82 77	85 79 75	85 79 75			
3	90 79 71	77 70 64	74 68 62	74 68 62			
4	82 70 61	69 60 54	66 59 53	66 59 53			
5	76 63 53	61 53 46	59 52 46	59 52 46			
6	70 56 47	55 47 40	53 46 40	53 46 40			
7	65 51 42	50 42 36	48 41 35	48 41 35			
8	60 46 38	46 37 32	44 37 32	44 37 32			
9	56 43 34	42 34 29	41 34 28	41 34 28			
10	53 39 31	39 31 26	38 31 26	38 31 26			

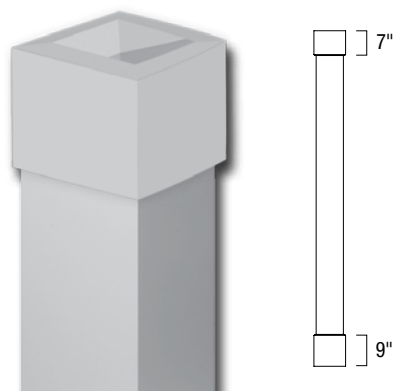
**Zonal Lumen Summary**

Zone	Lumens	% Lamp	% Fixture
0°-30°	478	26.9	26.9
0°-40°	782	44.0	44.0
0°-60°	1390	78.2	78.2
0°-90°	1779	100.0	100.0
90°-120°	0	0.0	0.0
90°-130°	0	0.0	0.0
90°-150°	0	0.0	0.0
90°-180°	1	0.0	0.0
0°-180°	1779	100.0	100.0

For 30K fixtures, use 1.02 multiplier; For 35K fixtures, use 1.03 multiplier, For 40K fixtures, use 1.07 multiplier.

# ProSelect Square Column Wraps

## Semi-Assembled Flat Panel with Plain Cap & Base\*



Shaft Width	Height	Flat Panel (FT)
<b>6"</b> (5 <sup>3</sup> / <sub>4</sub> " Actual) 3 <sup>1</sup> / <sub>2</sub> " Actual Inside Width	6' (72")	CWPR6X72SFT
	8' (96")	CWPR6X96SFT
	9' (108")	CWPR6X108SFT
	10' (120")	CWPR6X120SFT
	12' (144")	CWPR6X144SFT
<b>8"</b> (7 <sup>3</sup> / <sub>4</sub> " Actual) 5 <sup>1</sup> / <sub>2</sub> " Actual Inside Width	6' (72")	CWPR8X72SFT
	8' (96")	CWPR8X96SFT
	9' (108")	CWPR8X108SFT
	10' (120")	CWPR8X120SFT
	12' (144")	CWPR8X144SFT
<b>10"</b> (9 <sup>3</sup> / <sub>4</sub> " Actual) 7 <sup>1</sup> / <sub>2</sub> " Actual Inside Width	6' (72")	CWPR10X72SFT
	8' (96")	CWPR10X96SFT
	9' (108")	CWPR10X108SFT
	10' (120")	CWPR10X120SFT
	12' (144")	CWPR10X144SFT
<b>12"</b> (11 <sup>3</sup> / <sub>4</sub> " Actual) 9 <sup>1</sup> / <sub>2</sub> " Actual Inside Width	6' (72")	CWPR12X72SFT
	8' (96")	CWPR12X96SFT
	9' (108")	CWPR12X108SFT
	10' (120")	CWPR12X120SFT
	12' (144")	CWPR12X144SFT
Installation Kit	Installation Kit includes adhesive and screw pack	CWINSTALLKIT

\* Installation Kit sold separately.

ProSelect is not available for special orders.

Parts may be required to ship LTL (less than truckload) based on size and overall dimensions.

# Vertical Leg Structural Standing Seam Metal Roof Systems

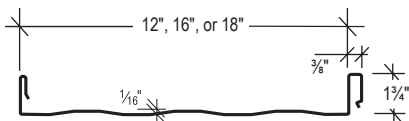
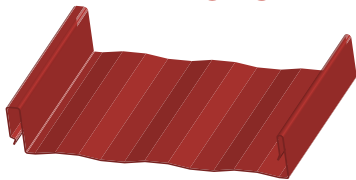
The vertical leg systems blend the aesthetics of an architectural panel with the strength of a structural panel. These panels have earned several UL uplift ratings, assuring reliability of performance, while also providing flexibility to meet design challenges.

Each of these SSR systems is designed to be installed over open framing. However, the MBCI LiteFrame®,  $\frac{5}{8}$ " plywood or a composite roof assembly may be used as an alternate substructure.



**PROJECT:** Audubon National Wildlife Refuge **LOCATION:** Coal Harbor, ND **PANEL PROFILE:** BattenLok® HS **COLOR:** Classic Green

## LOKSEAM®

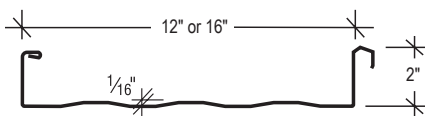
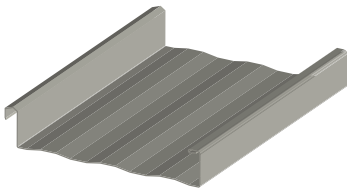


LokSeam® is a snap-together standing seam roof system with a 1 3/4" tall vertical rib for use on roofs with a minimum slope of 3:12. Available in 12-inch, 16-inch and 18-inch widths, LokSeam® panels can be installed over open framing or a solid substructure and are capable of transitioning from roof to fascia with the use of a rib cover. LokSeam® does not require a solid substructure for support.

### Product Specifications

- **Application:** Roof
- **Coverage Widths:** 12", 16", 18"
- **Minimum Slope:** 3:12
- **Panel Attachment:** Concealed Fastening System, Standard and UL 90 Clips
- **Gauges:** 24 (standard); 22 (12", 16", 18"), 26 (12") (optional)
- **Finishes:** Striated (standard); Embossed Striated (optional)
- **Coatings:** Galvalume Plus®, Signature® 200, Signature® 300, Signature® 300 Metallic

## SUPERLOK®



SuperLok® is a mechanically field-seamed system that combines a 2" tall slim rib with exceptional uplift resistance. MBCI designed the SuperLok® system to withstand the most rigorous weather conditions. This panel can be installed directly over purlins or bar joists, and does not require a solid substructure for support.

In addition to the UL 90 rating, the SuperLok® system meets a variety of ratings as tested under FM Global Corporation Standard 4471.

### Product Specifications

- **Application:** Roof
- **Coverage Widths:** 12", 16"
- **Minimum Slope:** 1/2:12
- **Panel Attachment:** Concealed Fastening System, Low, High (fixed or floating), Utility (no insulation clearance)
- **Gauges:** 24 (standard); 22, 26 (optional)
- **Finishes:** Smooth Striated (standard); Embossed Striated (optional)
- **Coatings:** Galvalume Plus®, Signature® 200, Signature® 300, Signature® 300 Metallic